



Eidgenössische Technische Hochschule Zürich
Swiss Federal Institute of Technology Zurich

CALLISTO status report/news letter #40

Type II burst observed with e-Callisto network:

Today, there was a CME between 13:22 and 13:33 UT, see NOAA event-message:

```
2490 + 1322 //// 1333 SAG C RSP 031-082 II/2 814
```

This observation demonstrates the strength of the network to get direct access to different wavelength ranges at different locations with some redundancy. There were only very few cases with observations of fundamental and harmonics of a type II burst. Unfortunately the server at **FHNW** is out of order, so there is currently no data access until Tuesday, April 2nd. Observatories which actively save their data on the FTP-server at FHNW are on the save side. All other data from observatories where we ourselves get the data may be missing because PERL scripts running on the same server are currently not active. I'll try to get relevant data manually next week. I'm sure there are more observatories with observation of the same burst.

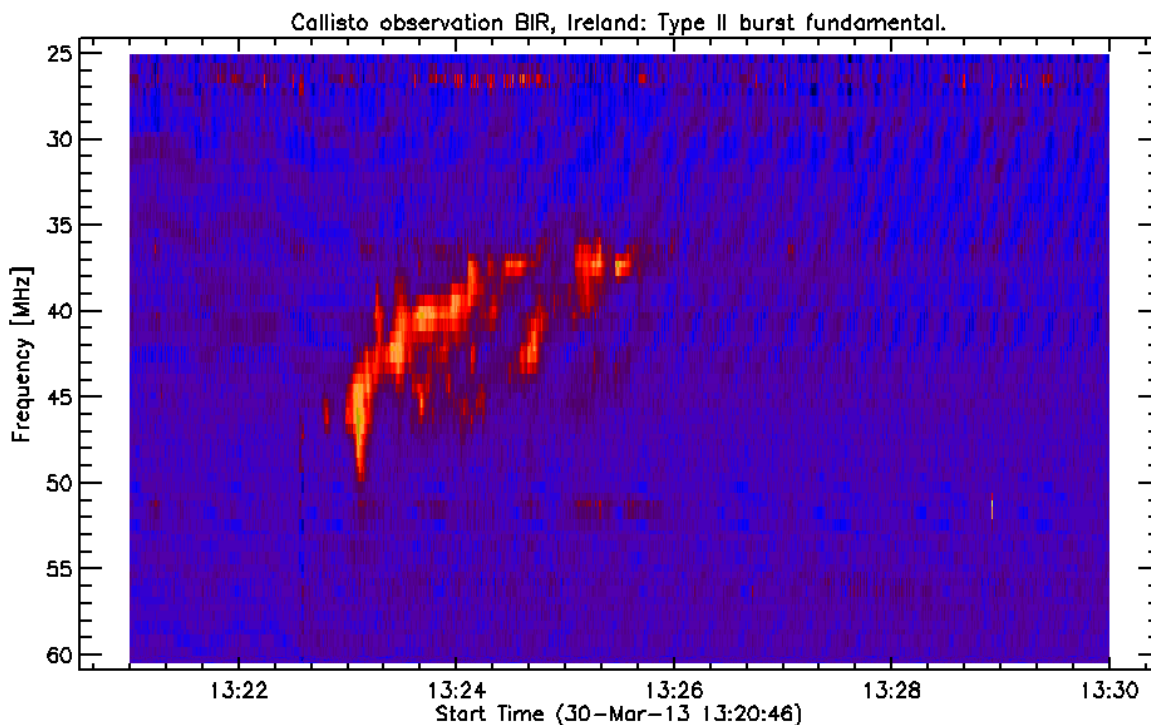


Fig. 1: Low frequency observation at BIR observatory (TCD Ireland). It shows fundamental of a type II burst connected to a CME of March 30th 2013.

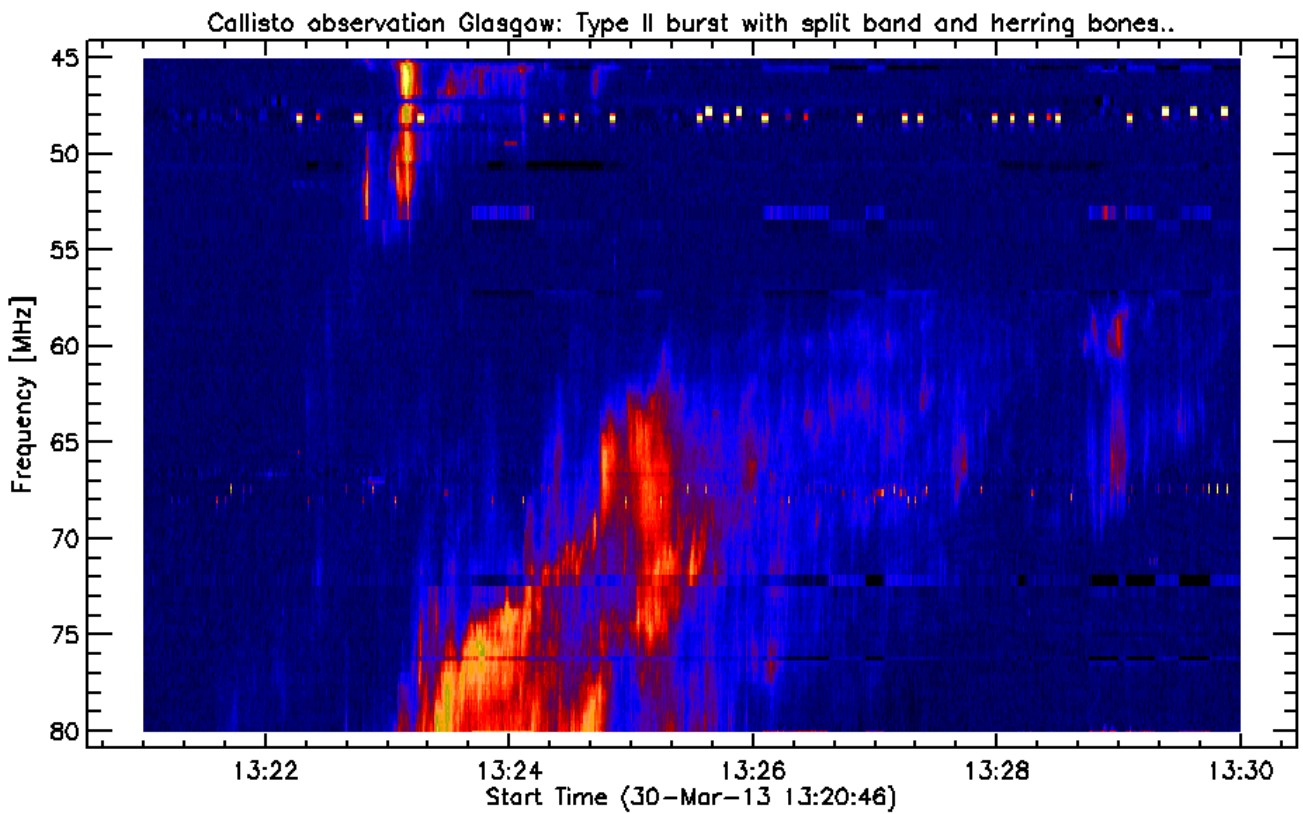
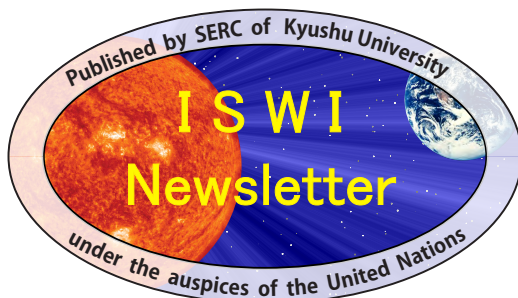


Fig. 2: Mid frequency observation at Glasgow observatory (UK). It shows harmonics of the same type II burst with split band due to magnetic configuration on the sun and also some herring bone structures.



This pdf circulated in
Volume 5, Number 39,
on 01 April 2013.

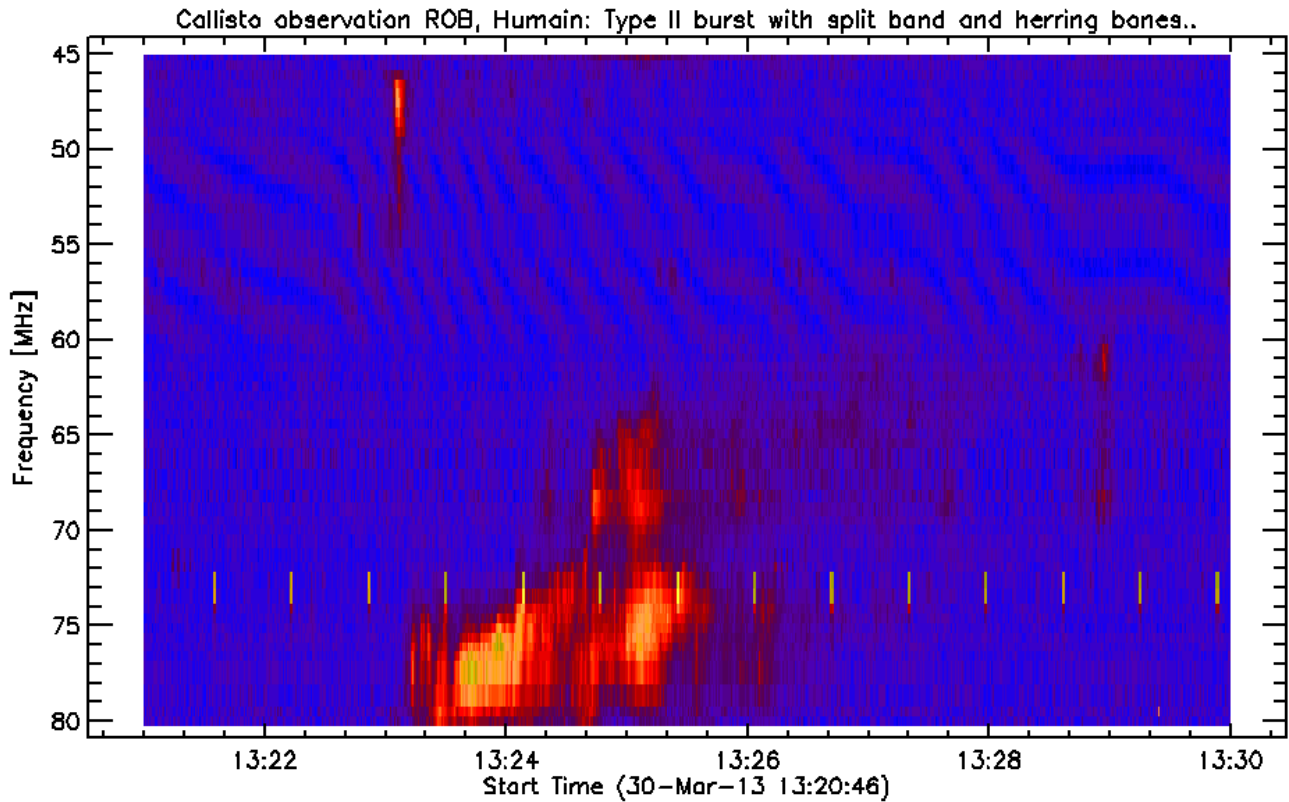


Fig. 3: Similar observation at Humain observatory (Royal Observatory of Belgium). It shows the same type II burst as in figure 1 and 2.

General information here: <http://e-callisto.org/>

AOB:

CALLISTO or Callisto denotes to the spectrometer itself while e-Callisto denotes to the worldwide network.

Please do not respond to the email-address of the list-server, respond instead directly to me (address below).
If you do not want to receive this news-letter please send me an email and I'll take your address out of the data base.
On the other hand if you think someone else might be interested in this kind of info, please let me know his/her email-address to be added to the data base.

Christian Monstein, Institute for Astronomy, ETH Zurich, Switzerland. email: monstein(at)astro.phys.ethz.ch